

# PRODUCT CATALOGUE

# Pan and tilt camera PIC 6.0 PELI



**CONTROLUNIT** ⊕ weight: 7,3kg ⊕ size: 57cm x 17cm x 34cm

**REEL** ⊕ size: L-60cm/W-38cm w. wheel (22cm w.n.w.)/H-74cm ⊕ weight: ca. 19kg



## WLAN



**128 GB internal storage  
(Upgrade possible)**



**Option of GEJOscan®  
reporting software for  
sewer and pipe inspection  
(possible with battery  
powered system)**



**Automatic quick  
Laser dimension -and  
deformation measuring**



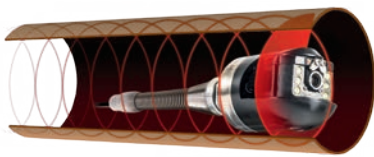
Guide unit for branch  
pipes with optimized  
form and  
"easy mount"-system



# Technical Specifications Branch Pipe - Pan and tilt camera PIC 6.0 PELI – for Ø100 up to Ø500 (optional)

- ✚ Pan and tilt inspection camera head made of stainless steel and alu
- ✚ Rotation endless
- ✚ Pan and tilt endless
- ✚ Automatic upright and straight view
- ✚ Automatic 360° rotation view
- ✚ Waterproof 1bar
- ✚ For bends with 90° in Ø100mm
- ✚ Changeable camerahead system
- ✚ Camerahead pressure control valve
- ✚ Automatic Laser dimension and deformation measuring in seconds
- ✚ Position of pan and tilt on Monitor in degree on Screen
- ✚ Digital Modul 0,08 Lux
- ✚ 70m fibreglas rod Ø9mm with integrated camera cable
- ✚ Adjustable transport wheels for reel
- ✚ Pouch for accessories on reel
- ✚ Hight adjustable handle for controlunit, turn around direction 360°
- ✚ Controllunit removable in Pelicase
- ✚ 10" Sunreflect Monitor
- ✚ Water resistant keyboard- optional remote controlled
- ✚ 1x Video In/Output
- ✚ Adjustable light control
- ✚ 220V/50Hz Power supply
- ✚ LIFEPO battery pack with controller on screen and with beep, 12V car adapter
- ✚ Recording in high DVD quality, snap shot function, all saved on 128GB storage (upgradable) 2x USB port for SSD storage, playback function
- ✚ WLAN
- ✚ Update per WLAN possible
- ✚ Textgenerator with meter on screen, Option: Reporting Software EN 13508-2
- ✚ 3D prepared with GPS location view and maps
- ✚ Inclination of pipe in "degree" on screen
- ✚ Remote controlled shutter

## OPTIONS/EXTRAS PIC 6.0 PELI



### PIC 6.0 - 970

Automatic quick Laser dimension -and deformation measuring on screen in mm



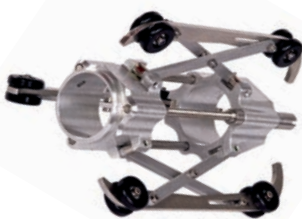
### PIC 6.0 - 850

Guide unit for branch pipes with optimized form and "easy mount" system



### PIC 6.0 - 145

Skid with wheels for pipes from Ø150mm



### PIC 6.0 - 162

adjustable skid with wheels for pipes from Ø150mm upwards



### PIC 6.0 - 534

changeable camera head, short version, Ø30mm with upright picture function



### PIC 6.0 - 550

changeable camera head Ø55mm with upright picture function



### PIC 6.0 - 600

PIC 5.5 and PIC 6.0 detections sonde 33kHz/512Hz



### PIC 6.0 - 812

changeable reel with camerahead Ø12mm made of stainless steel on rod Ø3,4mm-40m direct mounted with set of skid Ø30/40mm



### PIC 6.0 - 831

changeable reel with camerahead PIC 3.0 - Ø30mm made of stainless steel on rod Ø6mm-40m direct mounted with upright picture function



# Pan and tilt camera PIC 6.0 LC



**CONTROLUNIT** ⊕ weight: 4kg ⊕ size: 23cm x 14cm x 23cm

**REEL** ➕ size: L-60cm/W-38cm w. wheel (22cm o. R.)/H-74cm ➕ weight: ca. 19kg



## lightweight controlunit



**recording on  
SD card**



## LIFEPO battery pack



**Guide unit for branch  
pipes with optimized  
form and  
"easy mount"-system**



# Technical Specifications Branch Pipe - Pan and tilt camera PIC 6.0 LC – for Ø100 up to Ø500 (optional)

- ✚ Pan and tilt inspection camera head made of stainless steel and alu
- ✚ Rotation endless
- ✚ Pan and tilt endless
- ✚ Automatic upright and straight view
- ✚ Automatic 360° rotation view
- ✚ Waterproof 1bar
- ✚ For bends with 90° in Ø100mm
- ✚ Changeable camerahead system
- ✚ Camerahead pressure control valve
- ✚ Digital Modul 0,08 Lux
- ✚ 70m fibreglas rod Ø9mm with integrated camera cable
- ✚ Adjustable transport wheels for reel
- ✚ Pouch for accessories on reel
- ✚ Hight adjustable handle for controlunit, turn around direction 360°
- ✚ Controllunit removable in Pelicase
- ✚ 7" Monitor
- ✚ 1x Video In/Output
- ✚ Adjustable light control
- ✚ 220V/50Hz Power supply
- ✚ LIFEPO battery pack with controller on screen, 12V car adapter
- ✚ Recording and snap shot function on SD card
- ✚ Playback function
- ✚ Meter on screen

## OPTIONS/EXTRAS PIC 6.0 LC



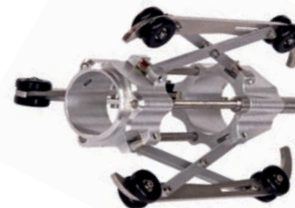
### PIC 6.0 - 850

Guide unit for branch pipes with optimized form and "easy mount" system



### PIC 6.0 - 145

Skid with wheels for pipes from Ø150mm



### PIC 6.0 - 162

adjustable skid with wheels for pipes from Ø150mm upwards



### PIC 6.0 - 360

brake for coiler-wheel



### PIC 6.0 - 534

changeable camera head, short version, Ø30mm with upright picture function



### PIC 6.0 - 550

changeable camera head Ø55mm with upright picture function



### PIC 6.0 - 600

PIC 5.5 und PIC 6.0 detections sonde 33kHz/512Hz



### PIC 6.0 - 812

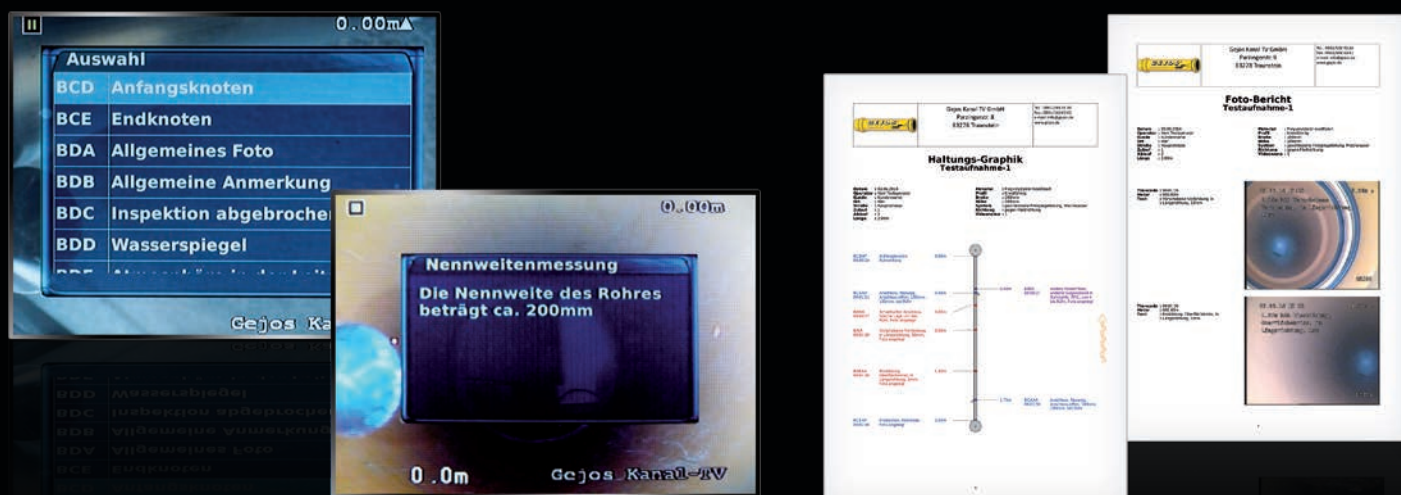
changeable reel with camerahead Ø12mm made of stainless steel on rod Ø3,4mm-40m direct mounted with set of skid Ø30/40mm



### PIC 6.0 - 831

changeable reel with camerahead PIC 3.0 - Ø30mm made of stainless steel on rod Ø6mm-40m direct mounted with upright picture function

# GEJOSCAN® reporting software for sewer and pipe inspection integrated in control unit

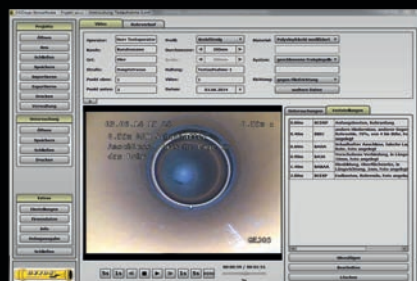


## REPORTING SOFTWARE: EN 13508-2

Software GEJOscan: Easy to use and mobile reporting software for sewer and pipe inspection. All inputs are possible via keyboard. Data are stored on integrated hard drive or directly stored on USB stick. All data can be transferred to the PC and then be written on CD/DVD. Easy creation of presentation on CD/DVD with video/indexing/report.

### DETAILS:

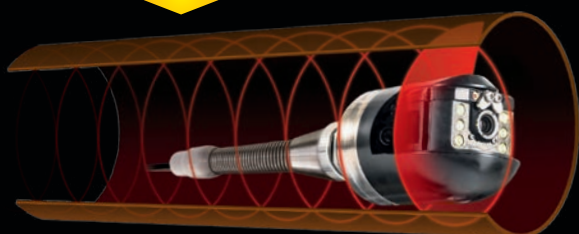
- ⊕ mobile inspection software integrated in control unit
- ⊕ operation via keyboard
- ⊕ selection lists with memory
- ⊕ EN 13508-2 Norm
- ⊕ clear and simple selection menu
- ⊕ AVI recording with pause function
- ⊕ 1 digital snapshot each entry with data on screen
- ⊕ detailed color report with pictures
- ⊕ automatic generation of reporting presentation with video
- ⊕ player/printer



## OFFICE GEJOSCAN REPORTING SOFTWARE FOR SEWER AND PIPEINSPECTION

For controlling and adjusting of reports made with mobile reportingsystem

- ⊕ project/inspection administrator
- ⊕ controlling and adjusting of reports
- ⊕ generation of report-presentation video
- ⊕ filing of projects



## LASER DIMENSION -AND DEFORMATION MEASUREMET

- ⊕ in mm on screen
- ⊕ simple operation

## GEJOS KANAL TV GMBH

Parzingerstraße 8 | D-83278 Traunstein  
 Telefon 08 61/166 35 24 | Fax 08 61/166 63 61  
 info@gejos.de | www.gejos.de